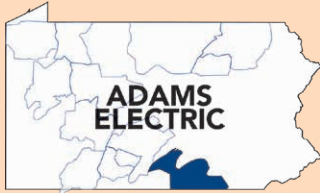




# Adams Electric Cooperative, Inc.

A Touchstone Energy® Cooperative 



One of 14 electric cooperatives serving Pennsylvania and New Jersey

## BOARD OF DIRECTORS

- Glenn E. Bange, President**
- Nadine M. Hubner, Vice President**
- Dale E. Myers, Secretary**
- Thomas J. Knaub, Treasurer**
- David A. Frey**
- Jay E. Grove**
- Jay A. Herman**
- S. Eugene Herritt**
- F.L. "Ray" Schwartz**

**Steve Rasmussen**  
CEO/General Manager

## ADAMS ELECTRIC COOPERATIVE, INC.

1338 Biglerville Road  
P.O. Box 1055  
Gettysburg, PA 17325-1055  
1-800-726-2324

## GETTYSBURG DISTRICT

1338 Biglerville Road  
Gettysburg, PA 17325

## YORK DISTRICT

200 Trinity Road  
York, PA 17408

## SHIPPENSBURG DISTRICT

10 Duncan Road  
Shippensburg, PA 17257

## DISTRICT OFFICE HOURS

Monday through Thursday  
7 a.m. - 5 p.m.\*  
\*By appointment only

Check out [adamsec.coop](http://adamsec.coop)

Like us on Facebook at  
[Facebook.com/AdamsEC](https://www.facebook.com/AdamsEC)

LOCAL PAGES EDITOR:  
**Kami Noel, CCC**

*This institution is an equal opportunity provider and employer.*

## Move Over, Driver



ACCORDING TO GOOGLE, AUGUST PLAYS host to several holidays and observances. There's International Beer Day, International Youth Day, International Lefthanders Day, World Mosquito Day and World Senior Citizens Day. Then don't forget National Chocolate Chip Cookie Day, National Middle Child Day and National Root Beer Float Day. Everyone can likely find one reason or another to celebrate. But they aren't all positive recognitions. National Road Victim Month is also held annually in August.

It's used to recognize and remember people injured or killed in motor-vehicle-related incidents. It was first designated in commemoration of Princess Diana in 1997 after she was killed in a motor-vehicle accident.

For me, August brings to mind the importance of protecting the many workers who spend every day in roadside situations, like our lineworkers.

In Pennsylvania, more than 4,400 deaths and 200,000 injuries were reported over a five-year period in active work zones, and the number remains on the rise.

The Commonwealth's Move Over Law, instituted with these people in mind, was enacted to protect emergency responders and road crews. Move Over enforces fines and penalties on those careless drivers who refuse to follow restricted traffic patterns and reduced speed limits in construction or work zones and at emergency scenes.

Pennsylvania's Move Over Law requires drivers approaching an emergency response area who are unable to safely merge into a lane farther away from the response area to "pass the emergency response area at a speed of no more than 20 miles per hour less than the posted speed limit and reasonable for safely passing."

While the safety of our employees is our No. 1 priority, we realize it's not everyone's. The number of young drivers, emergency workers and motorcyclists who are killed every year in motor-vehicle accidents is staggering. I hope I never see the day where I must tell my co-workers or an employee's family their loved one isn't coming home due to someone else's negligence.

In late June, we had some severe weather with thunder, lightning and high winds cross our service territory. Because the storm started late in the day, our lineworkers spent several hours working into the night in less than stellar conditions, including darkened roadways. These guys will do whatever it takes to get our members' power flowing again. Luckily, the Move Over Law is in place to help protect them. If only motorists would heed the warning.

I hope that as you finish your summer travel and look forward to the start of a new school year, you keep in mind the importance of not driving with distractions. Slow down, pay attention, and please, move over to keep our co-workers, your power providers — and someone's family member — safe! 🚗

**STEVE RASMUSSEN**  
CEO/GENERAL MANAGER

# Adams Awards \$27,000 in High School Scholarships

**SARAH FRANK**, CCC, COMMUNICATIONS/COMMUNITY RELATIONS COORDINATOR

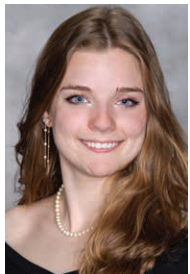
**THE CO-OP CONTINUED ITS MISSION** of improving the quality of life in the communities we serve by distributing \$1,000 scholarships\* to 27 high school seniors across its service territory for academics, as well as career and trade ambitions.

This brings the total donated to continuing education scholarships to \$462,000 since 2008. This total also includes scholarships to undergraduate college students and adult members of the cooperative.

Besides those shown below, the co-op also congratulates

the following high school seniors whose photos were not received in time for publication: Clayton Hetrick of Big Spring High School; Marissa Clapsadle and Brooke Leedy of Gettysburg Area High School; Araceli Kautz Portillo and Christian Keller of Littlestown Senior High School; Stella Gladson of New Oxford Senior High School; and Tucker Chamberlin of Shippensburg Area Senior High School.

*\*Scholarships are funded through unclaimed Ownership Rewards and do not affect rates.*



**KATHERINE ELLIOTT**  
BERMUDIAN SPRINGS HIGH SCHOOL



**JADEN HAIR**  
BIG SPRING HIGH SCHOOL



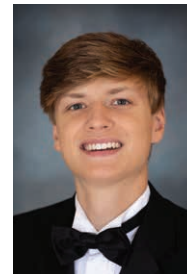
**RYLEE GARMAN**  
BIG SPRING HIGH SCHOOL



**NAYLEEN PAUL**  
BIGLERVILLE HIGH SCHOOL



**KAILEY GRANGER**  
DALLSTOWN AREA HIGH SCHOOL



**ADEN DAVIS**  
DELONE CATHOLIC HIGH SCHOOL



**MARLEIGH FETROW**  
DOVER AREA HIGH SCHOOL



**ANDREW KOONS**  
FAIRFIELD AREA HIGH SCHOOL



**TRENTON WITTE**  
FAIRFIELD AREA HIGH SCHOOL



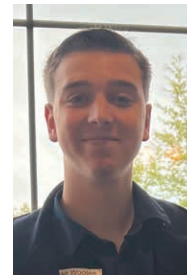
**REESE GOURLEY**  
GETTYSBURG AREA HIGH SCHOOL



**THERESE PHELAN**  
HOME-SCHOOLED



**JOSHUA TALCOTT**  
HOME-SCHOOLED



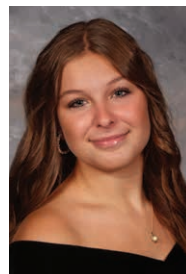
**CHASE WOOTTON**  
LITTLESTOWN SENIOR HIGH SCHOOL



**RYLEE OLIPHANT**  
RED LION AREA SENIOR HIGH SCHOOL



**MORGAN DIEHL**  
SHIPPENSBURG AREA SENIOR HIGH SCHOOL



**KIRA SHIRK**  
SHIPPENSBURG AREA SENIOR HIGH SCHOOL



**ANGELINA FONTANA**  
SPRING GROVE AREA SENIOR HIGH SCHOOL



**MARIA WIRFEL**  
SPRING GROVE AREA SENIOR HIGH SCHOOL



**HALEY HEBEL**  
SUSQUEHANNOCK HIGH SCHOOL



**JULIANNA YINGLING**  
WEST SHORE CHRISTIAN ACADEMY

# New Parkville Metering Point Energized

**KAMI NOEL**, COMMUNICATIONS/MEMBER RELATIONS COORDINATOR

**ADAMS ELECTRIC COOPERATIVE ENERGIZED** a new metering point July 24, the first since 2017. Construction of the new Parkville metering point, based in West Manheim Township, York County, started in January and was completed in May.

Slated to cost just over a million dollars, the new station increases electrical capacity from 7 to 10 megawatts of power, increasing reliability to the members served there. It also relocates service to a safer work area for employees. The circuit is fed off a breaker from First Energy's (Met-Ed's) Fairview substation.

"Three major improvements happened with relocating our Parkville metering point," explains Jeff Turner, manager of engineering — mechanical for Adams Electric. "First, our Parkville metering point is now located in a much safer work zone. Prior to the relocation, our line crews and technicians were required to access our old Parkville metering point by working over a guide rail along Black Rock Road.

"Second, we obtained a dedicated breaker position from First Energy, which means we are the only consumer on this circuit. Third, we have an express circuit from the Fairview substation within First Energy's transmission corridor, which translates to a clear right of way, which,

in turn, will provide extremely reliable service to our metering point site. All three of these improvements mean better reliability for our membership while keeping our employees in a much safer working environment."

The co-op worked with New River Electric on the metering point construction, while co-op employees handled project management, communications equipment installation, underground cable installation and control wiring.

The last project of this size was the energization of the co-op's Lake Redman metering point in York Township, York County, in June 2017. Following that process, the co-op's Fairfield substation underwent significant upgrades in 2018.

"The difference between a metering point and a substation is the metering point is a slightly smaller distribution point, where the incoming voltage is stepped down through a regulator instead of a power transformer," Turner explains.

Up next is a project in the Shippensburg District.

"After a recent study of the construction work plan and long-range plan, we've identified a need for a new Cleversburg substation within the next four years," Turner says. "We purchased a land parcel in Southampton Township, Cumberland County, where that structure will be planned for and developed."



**POWER TO PARKVILLE:** Top left, employees from the Adams Electric engineering and operations departments, including the York District linemen, met at the co-op's new Parkville metering point for final testing and station review in June prior to final energization in July. Personnel included, from left: Mike Feathers, Kornell Kuntz, Brian Shearer, Chris Gilbertson, Tyler Miller, Dru Hartman, Jason Stanley, Wyatt Taughinbaugh, Vic Brammann, Mike McKinney, Travis Rawlings, April Krumrine, Shawn Dehoff, Karen Harner, Tom McMaster, Steve Rasmussen, Chad Thoman, Jeff Turner and Cecil Knotts. At right, Kornell Kuntz, technical serviceman inspects a connection inside the new metering point. At bottom left, an overview of the new metering point. (Photos by Sarah Frank)

# Prepare Your Household for Fall Heating Needs

**SCOTT SIKER**, AERO ENERGY MARKETING MANAGER

**AS THE FALL SEASON DRAWS** nearer, it is important for homeowners who heat with propane or oil to prepare for the changing weather ahead. Whether these fuels are your home’s primary heat source or your backup, keep these considerations in mind.

## Automatic delivery vs. will-call

This is an important time of year to assess whether automatic or will-call deliveries are right for you. Should you choose the latter, you will take on the responsibility of monitoring your tank levels and will need to order fuel from your provider when your tank is running low. This option offers the advantage of price flexibility, allowing you to shop around for the best rate for each delivery. Should you choose automatic delivery, your fuel provider will take on the responsibility of ensuring your tank does not go empty and will automatically schedule deliveries for you based on their internal tracking. The primary advantages that automatic delivery offers are convenience and peace of mind.

## Fuel pricing plans

If you opt for automatic fuel delivery, you will likely be able to explore a variety of pricing plans for the year. Here are a few common options: A fixed-rate plan allows you to enjoy a steady price per gallon for the duration of the heating season. While the market rate continues to fluctuate, your fuel cost will be locked in at a predetermined rate. A cap rate is similar to a fixed rate; however, you will pay the lesser between your capped fuel rate and the market rate. This helps homeowners secure the best price per gallon; however, there are usually enrollment fees associated with these plans. Finally, a budget plan allows a homeowner to make monthly payments for their estimated fuel usage instead of having to make large lump-sum payments when they need a delivery.

## Best practices

As the summer winds down there are a couple of best practices you can follow to

ensure you’re ready for the fall season. 1) Check your tank levels. Summer fuel consumption can vary significantly by household, and the best way to avoid running out is by checking your tank gauge now. 2) If you are going to explore a new provider, be sure to check out their reviews online. 3) Conduct a couple of internet searches on how the fuel market is trending. If you haven’t thought about propane or heating oil pricing since last year, this will help inform you as you consider current plan options.

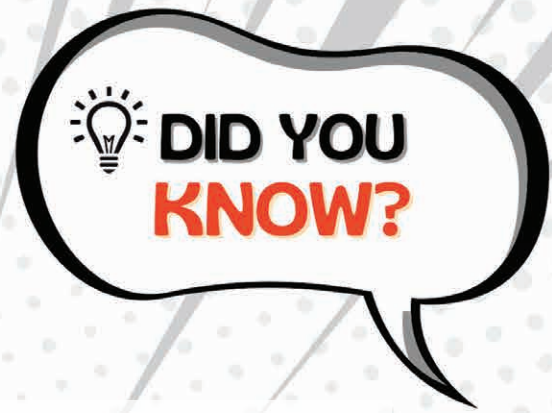
At Aero Energy, we pride ourselves in offering our customers flexible delivery schedules as well as a variety of payment plans. Adams Electric Cooperative members enjoy a 6-cents-per-gallon annual reimbursement on both propane and heating oil as well as HVAC/plumbing incentives when they choose Aero Energy as their home heating provider. If you’re interested in learning more, call 888-827-1695 or visit [aeroenergy.com](http://aeroenergy.com).



**FUEL UP:** An Aero Energy delivery driver carefully navigates across a homeowner’s driveway to make a propane delivery. Regular deliveries like this help ensure a seamless supply of fuel for your heating needs as fall approaches. Adams’ members enrolled in Aero Energy’s Adams Electric Cooperative Reimbursement Program saved a total of \$110,958.94 for the 2022-23 heating season.

# Co-op Spotlight

## Getting to know your employees and directors



### Mike Feathers



**Who am I:** I am the operations manager at the cooperative. I have nearly 27 years of service in the cooperative. The first 16 were spent as a lineman before moving into management. With a team of three district superintendents, one right-of-way coordinator and two warehouse clerks, I manage most of the outside operational employees. These staffers accomplish the daily work plan as far as connecting new accounts, performing line maintenance, restoring outages, and accomplishing our right of way clearing goals. My department's duties also include

maintaining the cooperative's fleet of large vehicles, three district properties and maintaining 28 delivery points.

**Family life:** When I am not at work, I enjoy spending time camping with my family or hunting as often as possible.

**Co-op difference:** I think the main difference is that the needs and interests of our members play such a vital role in all the decisions that we make here at the cooperative. The final question posed in nearly all things that we do is, "Is it beneficial to the membership?"

**With a magic wand:** The wind would never blow over 10 mph.

### Steve Rasmussen



**Who am I:** I started at Adams Electric in June 1999 as accounting manager and began my role as CEO in February 2006. As CEO, my role is very diverse. Ultimately, I am responsible for handling day-to-day operations, working with the board of directors to assist in their governance of the cooperative and working with members so they receive the best service we can provide to them.

**Family life:** I have three beautiful adult daughters ranging in ages from 24 to 29. In addition to spending time with

them, I enjoy traveling and being outdoors, especially when it's around water.

**Co-op difference:** The business model is so unique from other corporations. The cooperative exists to serve its members, and decisions are made with the members at the forefront of the decision at hand. We don't answer to shareholders or worry about stock prices. Our focus is to provide our members with the best possible service at the most reasonable prices while ensuring the safe and reliable delivery of electricity.

### Tom Knaub



**Who am I:** Board Member, 1999 to present; Board Treasurer, 2005 to present; Executive Board, 2005 to present; Chaired Budget & Finance Committee, 2005 to present; Delegate to Penn State, 2013 to present; MidAtlantic Cooperative Solutions Board, 2008 to present; AUSCO Board Treasurer, 2013 to present; Audit Committee Member, 2005 to present; Allegheny Delegate, alternate, 2022 to present; Credentialed Board Director, 2001; Board Leadership Certification, 2009; Gold Leadership Certification, 2016, 2019, 2021, and 2023.

**Family life:** I am currently retired after 40 years of service with the International Brotherhood of Electrical

Workers and held many roles, but retired as a regional superintendent. I enjoy life with my wife, son and grandkids. When we are not working around the farm, you can find us with the horses, hiking, camping and doing just about anything outdoors.

**Favorite part of the job:** The cooperative is unique in the sense that it provided service to rural America when none was available. It is very rewarding to serve in varied leadership roles, to give back to the community and to hear good words about an organization you represent.

**Co-op difference:** Cooperatives are small in scale, but mighty in offerings! They work together for an improved life in small communities — very member-driven and caring.

### Lori Kemper



**Who am I:** I have been at the co-op for 23 years. My title is safety/energy use specialist. I help members with their energy use. In March 2018, I earned my certified Loss Control professional certificate from the University of Wisconsin-Madison. In May 2018, I earned my associate degree in business

management from Harrisburg Area Community College.

**Family life:** I like to camp and play golf. I enjoy baseball, racing and playing with my granddaughter.

**Favorite part of the job:** Working with the members, but the most favorite thing I do is going into the community and working with children and their teachers with the miniature (low-voltage) safety demo. 🧑🏫

